



Lambda

9.7 CS

CONTROLS: Ants, Cockroaches, Crickets, Flies, Litter Beetles (adults/immature stages including Darkling, Hide, and Carrion), Mosquitoes, Spiders, Ticks and other listed insects

FOR USE IN: Food Handling Establishments, Food Serving Areas, Livestock/Poultry Housing Structures, Lawns/Grass and Ornamentals

Refer to the label for additional use sites and pests controlled.

GROUP	3	INSECTICIDE
-------	---	-------------

ACTIVE INGREDIENT:

Lambda-cyhalothrin (1 *α*S)-13 *α*Z)-14 *α*-cyano-2-(2-chlorophenyl)ethoxy)-3-(2-chloro-3,3-difluoro-1-propenyl)-2,2-dimethylpropanecarboxylate..... 9.7%

OTHER INGREDIENTS..... 90.3%

TOTAL..... 100.0%

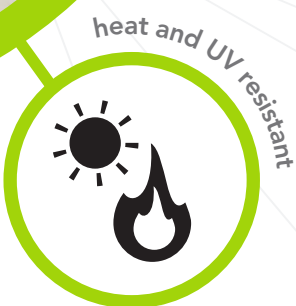
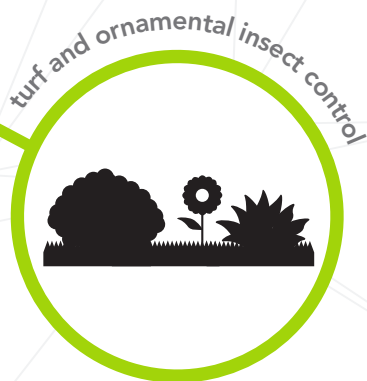
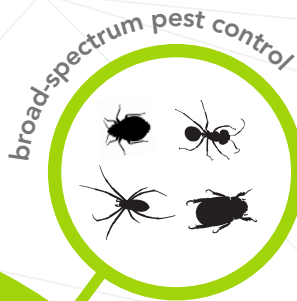
cyfluthrin pyrethroid

KEEP OUT OF REACH OF CHILDREN

CAUTION

See label for additional Precautionary Statements and Directions for Use.

NET CONTENTS: 1 QT (32 FL OZ)



A Network of
Broad-Spectrum
Control

GET ADVANCED PROTECTION WITH ZOËCON®

Lambda 9.7 CS equips management professionals with reliable broad-spectrum control. This encapsulated insecticide is formulated with **advanced protection technology** that prevents the active ingredient from breakdown in heat and UV exposure resulting in **greater residual control** and **reduced callbacks**. Lambda 9.7 CS also stays in suspension with no clogging or clumping.

Learn more about Lambda 9.7 CS and see how you can extend your insect control protocol at Zoecon.com



Lambda

9.7 CS

TREATMENT OPTIONS

- Crack-and-crevice treatments
- Spot treatments
- Foam treatments for structural voids
- Barrier treatments via ULV equipment and backpack blowers

ACTIVE INGREDIENT

- Lambda-Cyhalothrin 9.7%

ABOUT THE ACTIVE INGREDIENT

Lambda 9.7 CS features the active ingredient lambda-cyhalothrin, a synthetic pyrethroid insecticide. It is used to control a wide range of flying and crawling insects in indoor and outdoor areas, in both residential and commercial locations.

FEATURES

- Broad-spectrum control of flying and crawling insects, including adult mosquitoes
- Formulated with microencapsulated technology to resist heat breakdown
- Ideal tank-mix partner with an insect growth regulator (IGR)
- Can be converted to foam to treat structural voids

BENEFITS

- Approved for sensitive application sites, including food handling areas
- Residual qualities reduce callbacks
- No phytotoxicity
- Non-corrosive formulation

AVAILABLE SIZES

- 8 oz. bottle, 12 per case
- 32 oz. bottle, 6 per case
- EPA Reg. #89459-51

APPLICATION RATES

- See label for complete dilution and application rate instructions. Follow all label directions.

INSECTS CONTROLLED

- Ants
- Bed Bugs
- Bees
- Box Elder Bugs
- Carpenter Bees
- Carrion Beetles
- Centipedes
- Cluster Flies
- Cockroaches
- Crickets
- Darkling Beetles
- Earwigs
- Firebrats
- Flies
- Hide Beetles
- Litter Beetles
- Millipedes
- Mosquitoes
- Pantry Pests
- Pillbugs
- Sowbugs
- Silverfish
- Spiders
- Termites (above ground only)
- Ticks
- Wasps

APPLICATION SITES

- Lawn and Turf
- Ornamental Plants
- Pantries
- Food Handling Areas
- Livestock Housing
- Pet Kennels