

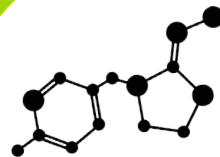
powerful termite control



approved for pre- and post-construction applications



active ingredient



Imidacloprid



Adonis™ 2F Insect Concentrate

CONTROLS: Subterranean Termites, Drywood Termites, Dampwood Termites, Carpenter Ants, And Other Listed Wood-Infesting Insects

FOR USE ON: Turfgrass, Landscape Ornamentals, Residential Fruit And Nut Trees And Interior Plantscapes

For use by individuals/firms licensed or registered by the state to apply termiticide products. States may have more restrictive requirements regarding qualifications of persons using this product. Consult the structural pest control regulatory agency of your state prior to use of this product.

GROUP	4	INSECTICIDE
ACTIVE INGREDIENT:		
Imidacloprid, 1-[6-(Chloro-3-pyridinyl)imidazo[1,2-b]imidazole]	21.4%	
OTHER INGREDIENTS:	78.6%	
TOTAL:	100.0%	

KEEP OUT OF REACH OF CHILDREN
CAUTION
 See inside label for additional Precautionary Statements.
 Imidacloprid, 6-(Chloro-3-pyridinyl)imidazo[1,2-b]imidazole, and its salts are highly toxic to aquatic organisms. Do not use this product near or in water bodies.
 Do not use this product until the label has been fully explained to you.
 EPA Reg. No. 89459-04
 ZOECON

residual control



A Network of Control

TREAT THE SOURCE OF TERMITE INFESTATIONS WITH ADONIS™ 2F INSECT CONCENTRATE

Pest management professionals have relied on Adonis™ 2F Insect Concentrate to provide powerful knockdown of termite colonies. The active ingredient imidacloprid disrupts the insect's nervous system. Approved for pre- and post-construction application sites, indoor plantscapes, turf and lawn treatments, Adonis™ 2F Insect Concentrate can be counted on to help eliminate termite infestations at the source.

See how you can leverage termite control with Adonis™ 2F Insect Concentrate at Zoecon.com



Adonis™ 2F Insect Concentrate

TREATMENT OPTIONS

- Void treatments
- Surface spray
- Perimeter treatments

ACTIVE INGREDIENT

- Imidacloprid 21.4%

ABOUT THE ACTIVE INGREDIENT

Adonis™ 2F Insect Concentrate features the active ingredient imidacloprid, a systemic insecticide whose mode of action is as a neonicotinoid, an insect neurotoxin that blocks the pest's nervous system resulting in death. This neurotoxin binds to the receptors of insect neurons more strongly than it does to those of mammals, resulting in a low toxicity profile to mammals and humans.

FEATURES

- No pyrethroid restrictions
- Colony control of ants and termites
- Ideal for pre- and post-construction site applications

BENEFITS

- Approved for use on interior plantscapes
- High quality
- Long lasting

AVAILABLE SIZES

- 27.5 fl. oz. bottle, 6 per case
- 1 gal. bottle, 4 per case
- 2.15 gal. bottle, 2 per case
- EPA Reg. #89459-54

APPLICATION RATES

See label for complete dilution and application rate instructions. Follow all label directions.

INSECTS KILLED

- Ambrosia Beetles
- Anobiid or Deathwatch Beetles
- Bark Beetles
- Carpenter Ants
- Dampwood Termites
- Drywood Termites
- False Powder Post Beetles
- Old House Borers
- Powder Post Beetles
- Subterranean Termites
- Wharf Borers

APPLICATION SITES

- Lawn and Turf
- Interior Plantscapes
- Ornamental Plants
- Residential Fruit and Nut Trees
- Pre-construction Termite Control
- Post-construction Termite Control