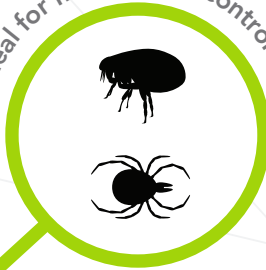




ideal for flea and tick control



control area



contact kill + residual



active ingredients

- (S)-Methoprene
- PBO
- Pyrethrins
- Tetramethrin
- Etofenprox

360° valve



A Network of
Control

STEP UP YOUR FLEA & TICK CONTROL

Precor® 2625 spray connects you with easy control of fleas, ticks and a wide variety of other crawling insects. Precor® 2625 aerosol delivers a **quick kill** of adult fleas, ticks and other listed insects, while (S)-methoprene **breaks the flea life cycle**. The **extended coverage** area of 2,625 square feet, along with its 360-degree valve and System III compatibility, delivers **maximum flexibility**. Precor® 2625 spray provides pest management professionals the performance to step up treatment protocols to **solve any infestation**.

See how you can step up insect control with
Precor® 2625 Premise Spray at Zoecon.com



Precor[®] 2625 Premise Spray

TREATMENT OPTIONS

- Broadcast spray
- Crack-and-crevice spray
- Surface spray
- Void treatments
- Spot treatments

ACTIVE INGREDIENTS

- (S)-Methoprene 0.09%
- Piperonyl Butoxide 1.50%
- Pyrethrins 0.15%
- Tetramethrin 0.25%
- Etofenprox 1.00%

INSECTS KILLED

- Fleas
- Ticks
- Bed Bugs
- Argentine Ants
- Asian Lady Beetles
- Carpenter Ants
- Cockroaches
- Crickets
- Fire Ants
- Spiders
- Earwigs
- Firebrats
- Flies
- Flour Beetles
- House Dust Mites
- Pantry Pests
- Pillbugs
- Silverfish
- Sowbugs
- Saw-toothed Grain Beetles
- Wasps
- Yellow Jackets

APPLICATION SITES

- Apartments
- Carpets
- Floors
- Furniture
- Homes
- Hospitals
- Hotels
- Kennels
- Mattresses (seams and folds)
- Motels
- Pet Bedding
- Schools
- Warehouses
- Rail Cars
- Buses
- Trucks and Trailers

ABOUT THE ACTIVE INGREDIENTS

Precor[®] 2625 Premise Spray features (S)-methoprene, an insect growth regulator (IGR). This molecule has been used for more than 35 years by pest control and public health professionals to prevent flea and other labeled insect larvae from developing into nuisance breeding, biting adult insects. While (S)-methoprene disrupts the reproductive cycle of flea larvae, the unique blend of insecticidal ingredients kills listed adult pests.

FEATURES

- One can provides 2,625 square feet of coverage
- Labeled for a broad spectrum of pests
- 360-degree valve
- System III compatible

BENEFITS

- Provides more than 200 days of insect growth regulator (IGR) protection against developing flea larvae
- Designed to provide immediate contact kill with residual protection for efficient and lasting control
- Non-staining formulation

AVAILABLE SIZES

- 21 oz. can
- 12 cans per case
- EPA Reg. #89459-12

APPLICATION RATES

- For complete application instructions, refer to the Precor[®] 2625 specimen label