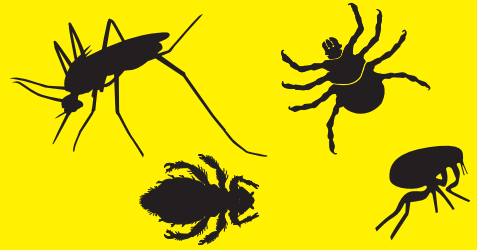


Petcor[®]

FLEA SPRAY



**KILLS FLEAS, TICKS, LICE, & MOSQUITOES
WITH PRECOR[®] INSECT GROWTH REGULATOR
FOR DOGS, PUPPIES, CATS, & KITTENS
PREVENTS FURTHER INFESTATIONS FOR UP TO 63 DAYS**

SPECIMEN LABEL

ACTIVE INGREDIENTS:

(S)-Methoprene (CAS #65733-16-6) 0.27%
 Pyrethrins (CAS #8003-34-7) 0.20%
 Piperonyl butoxide (CAS #51-03-6) 0.37%
 N-octyl bicycloheptene dicarboximide
 (CAS #113-48-4) 0.62%

OTHER INGREDIENTS: 98.54%
 Total 100.00%

EPA Reg No. 2724-404

KEEP OUT OF REACH OF CHILDREN
CAUTION
 SEE ADDITIONAL PRECAUTIONARY STATEMENTS

**READ ENTIRE LABEL BEFORE EACH USE
 USE ONLY ON DOGS, PUPPIES, CATS, KITTENS
 SHAKE WELL BEFORE USING.**

**PRECAUTIONARY STATEMENTS
 HAZARDS TO HUMANS
 CAUTION**

Harmful if swallowed or absorbed through skin. Avoid contact with skin, eyes, or clothing. May cause dermal sensitization (skin allergy).

**HAZARDS TO ANIMALS
 CAUTION**

Consult a veterinarian before using this product on debilitated, aged, pregnant, nursing, or animals on medication. Sensitivities may occur after using ANY pesticide product for pets. If signs of sensitivity occur, bathe your pet with mild soap and rinse with large amounts of water. If signs continue, consult a

veterinarian immediately. Some cats may be sensitive to products containing pyrethrins. Excessive salivation and ear and paw flicking may occur; however, these effects are temporary and not harmful. May cause dermal sensitization (skin allergy).

FIRST AID	
Call a poison control center or doctor immediately for treatment advice.	
If in eyes	<ul style="list-style-type: none"> • Hold eye open and rinse slowly and gently with water for 15-20 minutes. • Remove contact lenses, if present, after the first 5 minutes, then continue rinsing eye.
If on skin or clothing	<ul style="list-style-type: none"> • Take off contaminated clothing. • Rinse skin immediately with plenty of water for 15-20 minutes.
If swallowed	<ul style="list-style-type: none"> • Have person sip a glass of water if able to swallow. • Do not induce vomiting unless told to do so by the poison control center or doctor. • Do not give anything by mouth to an unconscious person.
Have the product container or label with you when calling a poison control center, doctor, or veterinarian, or going for treatment. You may also contact 1-800-248-7763 for emergency medical treatment information.	

PHYSICAL HAZARDS

Combustible. Do not use or store near heat or open flame.

DIRECTIONS FOR USE

It is a violation of Federal Law to use this product in a manner inconsistent with its labeling.

FOR DOGS AND CATS

FOR FLEAS

A light, even coverage of the hair coat will provide effective flea control. Do not allow spray from application or damp animal to come into contact with painted or finished surfaces, including wood floors/furniture, leather/vinyl materials, or other surfaces of concern. For best penetration, ruffle the coat while spraying against the natural lay of the hair. Cover animal's eyes with hand. With a firm fast stroke, spray head, ears, and chest. With cloth, rub into face around mouth, nose, and eyes. Then spray the neck, middle and hind quarters, finishing with legs and tail last. Avoid spraying rectum and genitals. Apply at the rate of 1 or 2 squeezes of the trigger sprayer per pound of body weight. For larger dogs, spray until damp, not saturated. Do not allow animals, cats in particular, to become chilled. Repeat every 2 months, for continuous home flea infestation prevention. If you pet becomes reinfested with adult fleas from outside sources, PETCOR® Flea Spray may be reapplied weekly.

FOR TICKS

Make sure spray thoroughly wets individual ticks.

FOR PUPPIES AND KITTENS

FOR FLEAS

Leaving the eyes, nose, and mouth exposed, treat puppies and kittens weighing less than 3 pounds by wrapping the animal in a towel that has been lightly sprayed with PETCOR Flea Spray, for 5 to 10 minutes. Or lightly spray a brush or cotton ball and work thoroughly into the hair coat. Fleas may then be removed from the coat by picking or combing. Puppies and kittens over 3 pounds may be treated the same as dogs and cats as described above. Repeat every 2 months for continuous home flea infestation prevention. If you pet becomes reinfested with adult fleas from outside sources, PETCOR Flea Spray may be reapplied weekly. Do not allow animal to become chilled. **DO NOT USE ON PUPPIES AND KITTENS UNDER 12 WEEKS OF AGE.**

STORAGE AND DISPOSAL

Do not contaminate water, food, or feed by storage or disposal.

Storage: Do not store near heat or open flame. Store away from children and animals.

Disposal: If empty: Do not reuse this container. Place in trash or offer for recycling if available. **If partly filled:** Call your local solid waste agency or 1-800-CLEANUP for disposal instructions. Never place unused product down any indoor or outdoor drain.

WARRANTY

Seller makes no warranty, expressed or implied, concerning the use and handling of this product other than indicated on the label. Buyer assumes all risks of use and handling of this material when such use and handling are contrary to label instructions.

For information, or in an emergency, call 1-800-248-7763 or visit our Web site: www.zoecon.com



Wellmark International
Schaumburg, Illinois U.S.A.

PETCOR® Flea Spray, PRECOR® Insect Growth Regulator and
ZOECON® are registered trademarks of Wellmark International.
©2003 WELLMARK INTERNATIONAL

March 2003
Schaumburg, IL